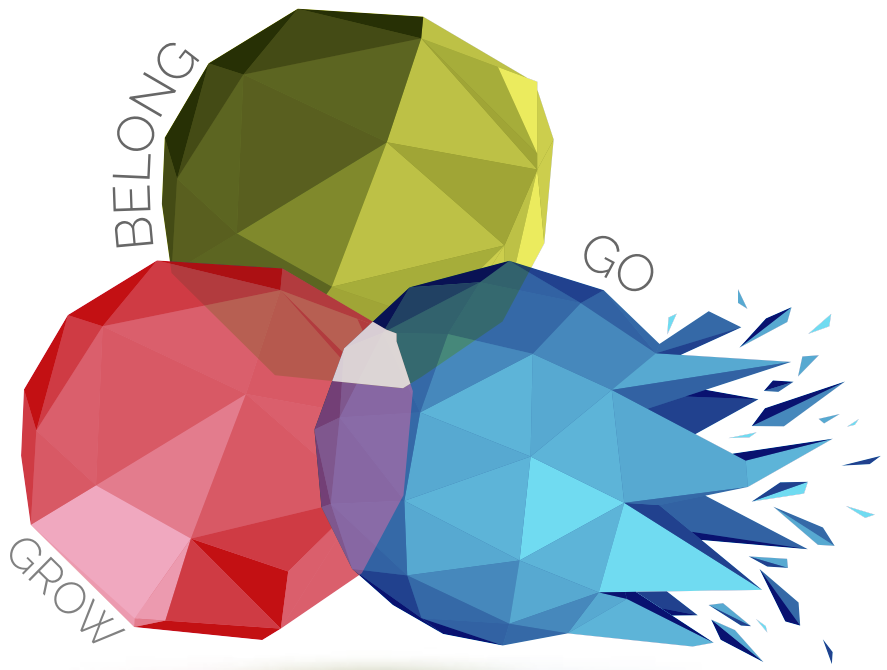
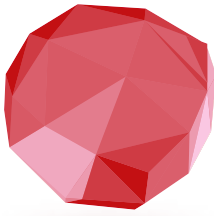


GROW





GROW ASSESSMENT

We believe that growing in faith is a journey of choosing God's way over our way and in so doing, position our lives to experience relationship with Jesus and encounter a change where our lives begin to look like His.

How has my life, choices, & character changed to look like Jesus' in the past **year?**

month?

week?

I'm participating in communal conversations about questions of **life, faith, and Jesus.**

I'm practicing spiritual disciplines in order to position my life to encounter **deeper relationship with Jesus,** through:

Scripture reading (**The Chronicle** is a great tool to help with this)

Prayer, both individual and corporate (with others)

Eucharist (communion)

Baptism

Confession & Accountability

Activities of service & sacrifice (bringing Kingdom realities to earth)

How am I still choosing **my way** over **His way?**